



SunShare
COMMUNITY SOLAR

Cleaner. Brighter. Better.



Stage I: Pre-development & Internal Decision-Making

SunShare, LLC | Salina Derichsweiler | 2024

About SunShare

We Create Positive Energy

- ❖ Instrumental in program policy development in Colorado, Minnesota, and New Mexico
- ❖ Industry leader who creates ethical standards and sustainable best practices
- ❖ Aligned with partners and invest in our communities to enable mutually beneficial energy development



Core Values:



Inquisitive



Results Driven



Transparent



Environmental

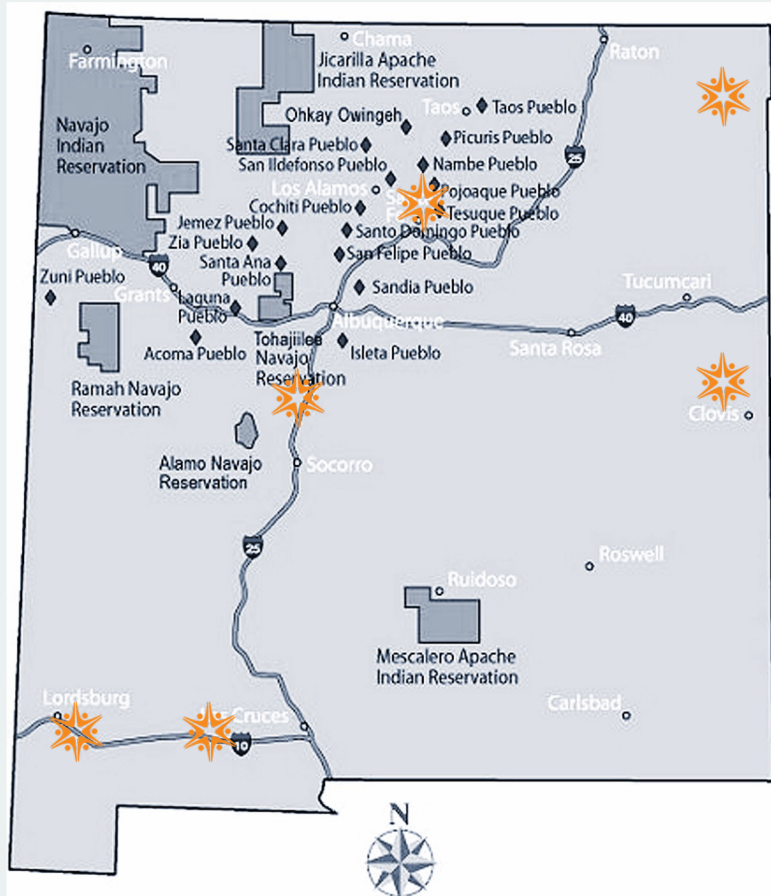


Friendly

Visit mysunshare.com to see if you are eligible to subscribe!



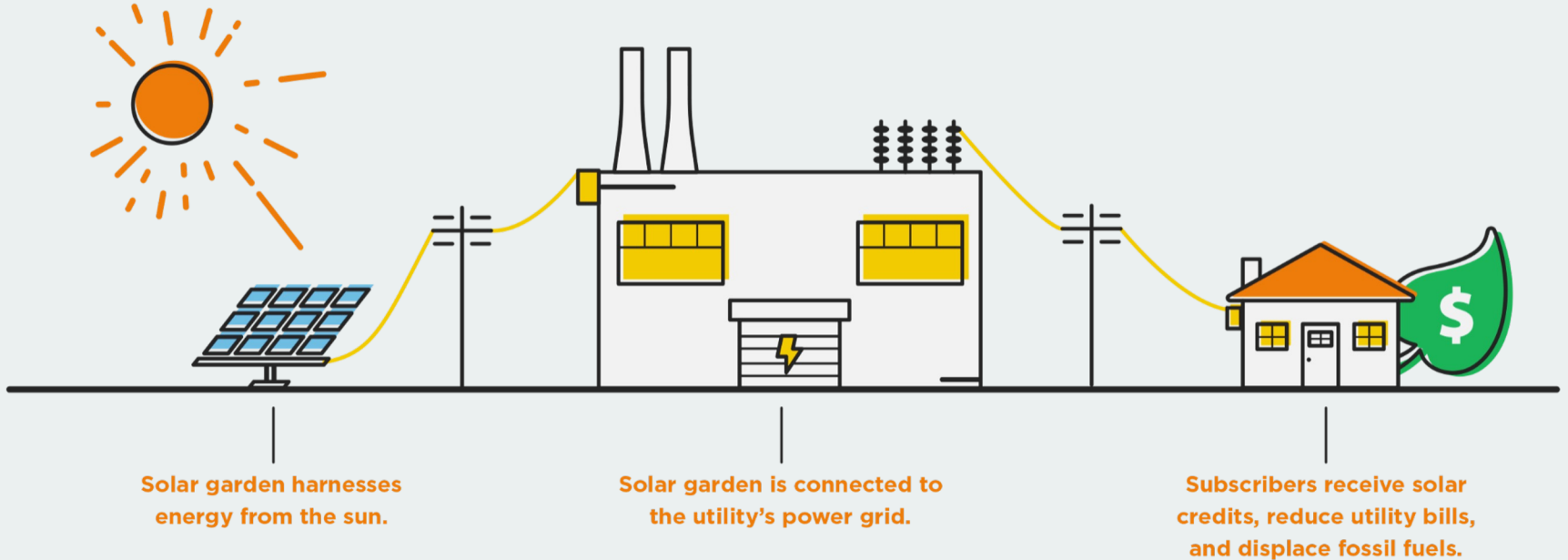
SunShare Awarded 6 Projects in New Mexico RFP



- ❖ Pueblos who are PNM and SPS customers can subscribe to SunShare gardens
 - **Up to 50% reduction in energy costs for qualified individuals and businesses**
- ❖ SunShare commitment invests in communities:
 - \$6.0 million to Navajo Technical University
 - \$1.2 million to CSVANW
 - \$11,000/year scholarship through Sovereign Energy

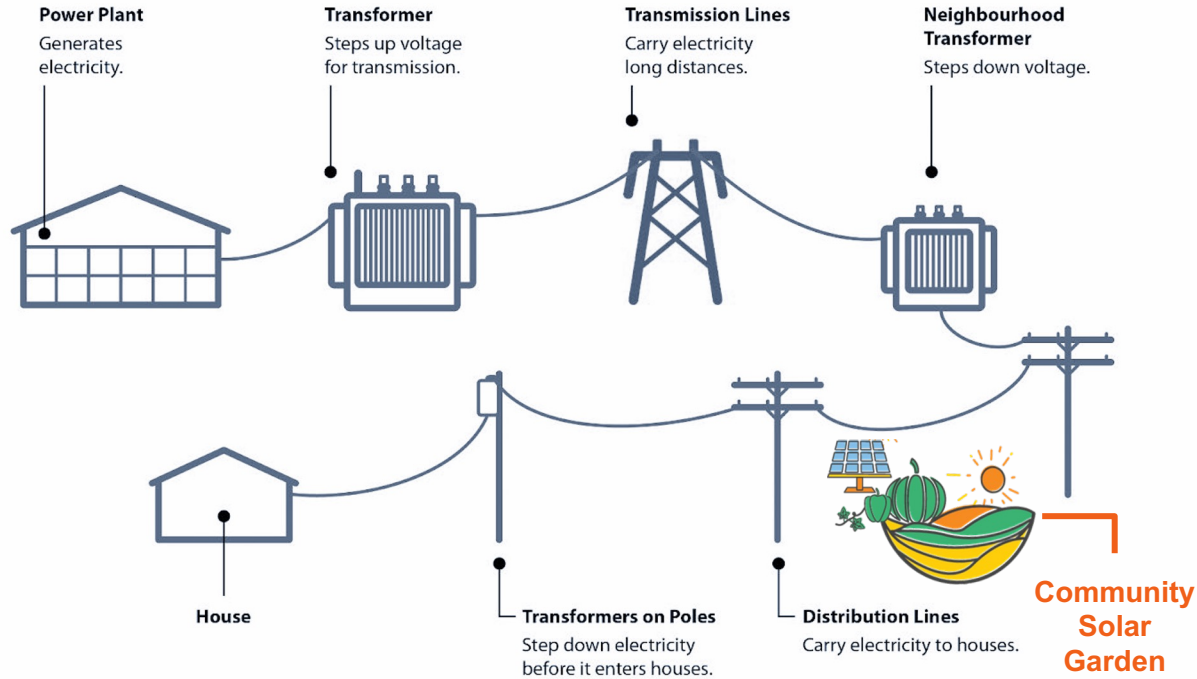


End-to-End Management



Electricity Generation 101

Electric Power Generation, Transmission, and Distribution



Community Solar is Energy Sovereignty

What is Energy Sovereignty?

The right of communities and peoples to make their own decisions on energy generation, distribution, and consumption appropriate to their ecological, social, economic, and cultural circumstances.



Co-Development & Centering Indigenous Voice

Operations & Management



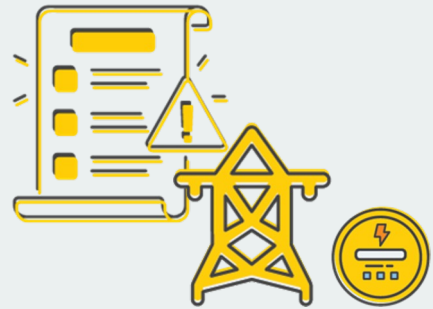
Planning & Engineering



Procurement & Construction



Regulatory & Permitting



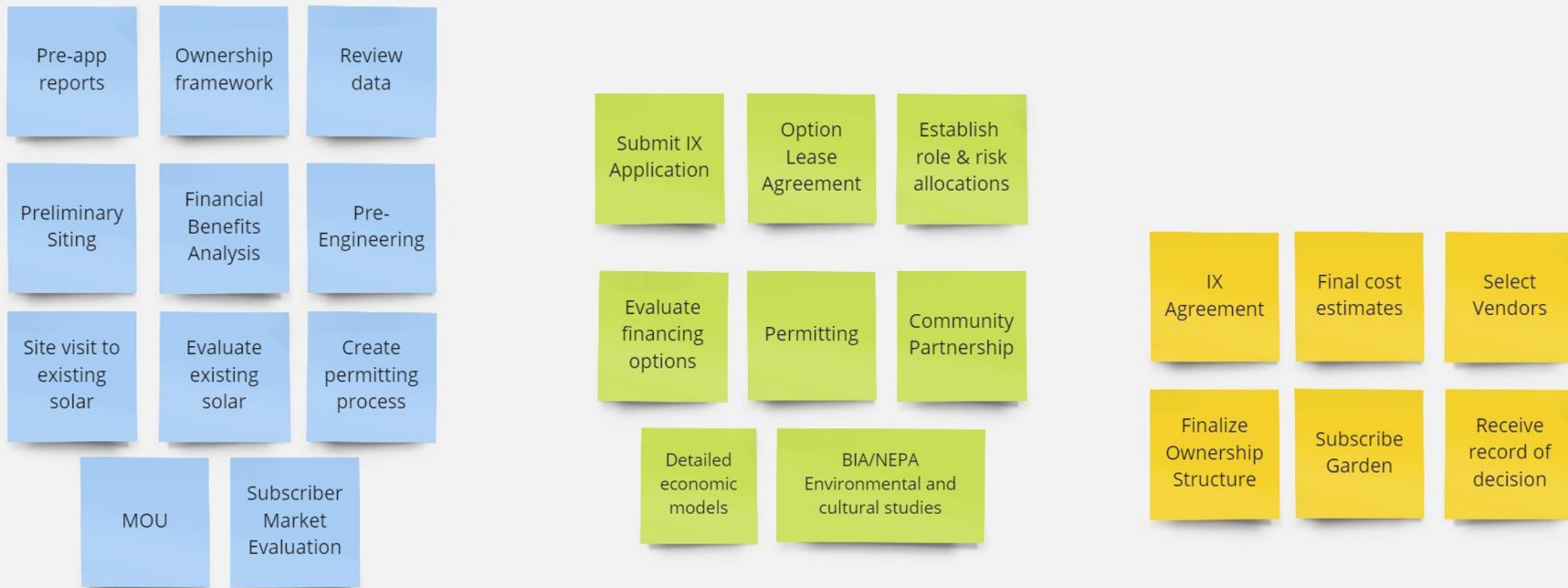
Offtake & Ownership



INDIGENOUS VOICES

A central graphic consisting of several overlapping, colorful waves in shades of yellow, orange, red, purple, and green. Below the waves, the words "INDIGENOUS VOICES" are written in a bold, black, sans-serif font. The entire graphic is enclosed within a large, grey, circular arrow that points clockwise.

Planning Driven by Tribal Timelines



Phase I

Viability Analysis

Phase II

Project Development

Phase III

Final Agreements



Potential Ownership Structures

0%

**Developer Owned
Tribal Land Lease**

Traditional energy
development

- No finance or construction risk
- Limited participation and ownership
- No expertise required

+/-50%

**Developer Build to
Transfer**

Negotiated ownership
typically transferred at
year 5-6

- No finance or construction risk
- Royalty payment or profit sharing options
- Requires operational expertise

51+%

**Tribal Energy
Development
Organization
(TEDO)**

Tribe maintains
controlling interest

- Access to DOE loans
- Tribal risk on financing, construction, and operations

100%

**Tribal Utility
Owned and
Operated**

Advance Tribal resources
and infrastructure

- Right to determine price of electricity
- Own 100% infrastructure
- Developer provides services for a fee



Due Diligence

Pre-Application Reports

Preliminary

Uses high-level data from to determine the likelihood of successfully building a garden on the selected site (Utility Pre-Application Data Reports, Desktop Constraint Analysis, etc.)

Interconnection Application
System Impact Study
Facilities Study
Transmission Study

Critical Path

Provides regular check-ins on the garden's development and ensures that stakeholders are willing to continue developing the garden as more detailed information becomes available

Final Agreements
Interconnection Agreement
NEPA/BIA

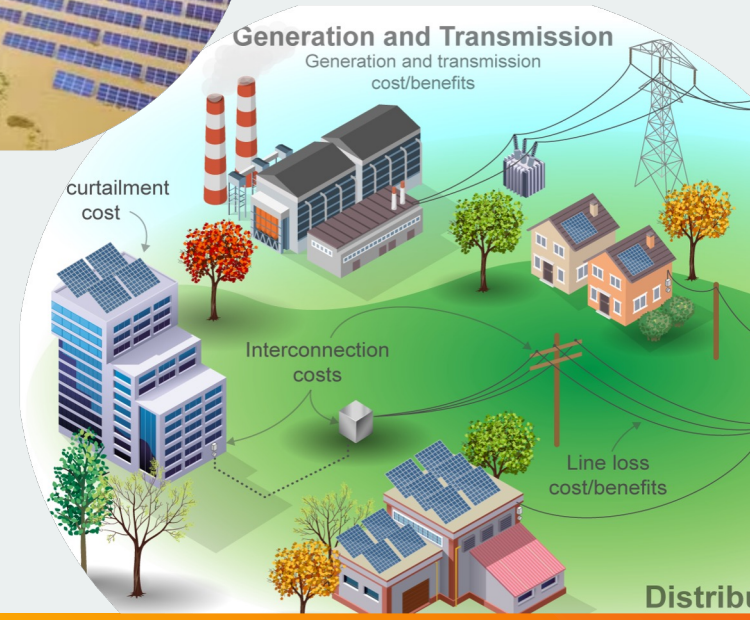
Transaction

Allows for review of all project documentation by stakeholders to ensure that the Developer has met the standard set by the garden's stakeholders and financiers

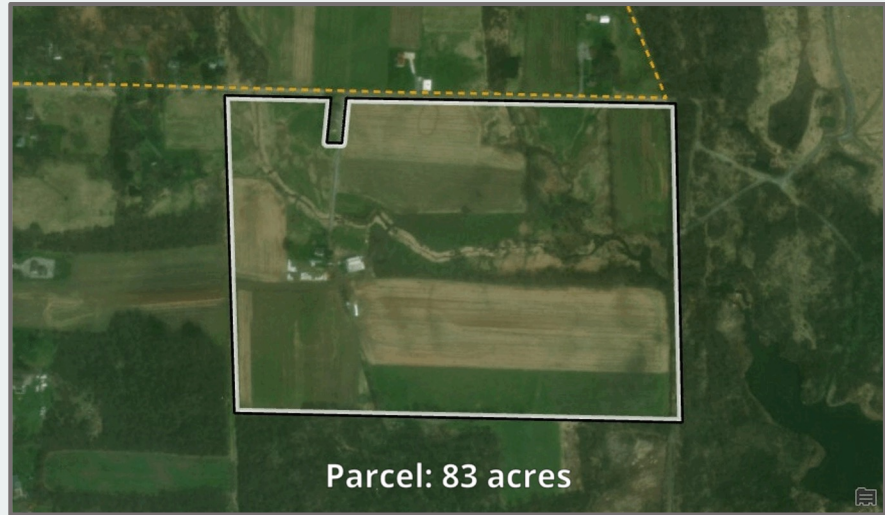
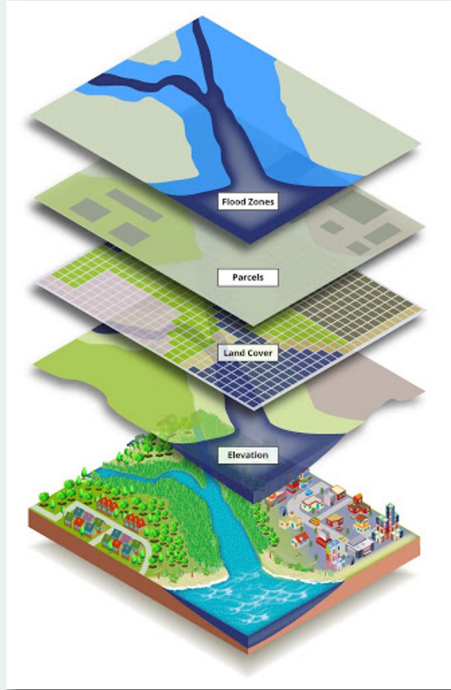


Choosing Suitable Sites for Development

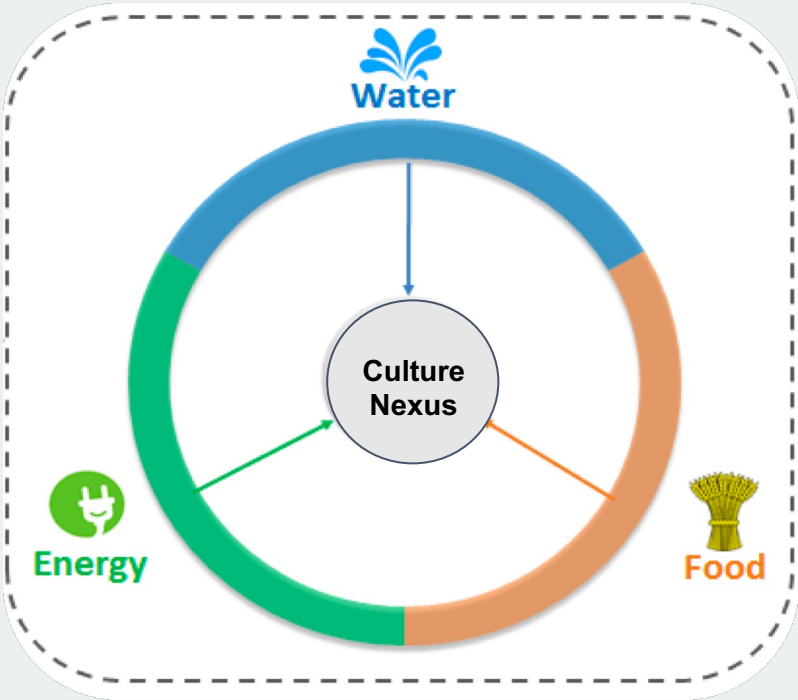
- ❖ Cultural Constraints
- ❖ Environmental Constraints
- ❖ Technical Feasibility
- ❖ Economic Factors
- ❖ Policy Considerations



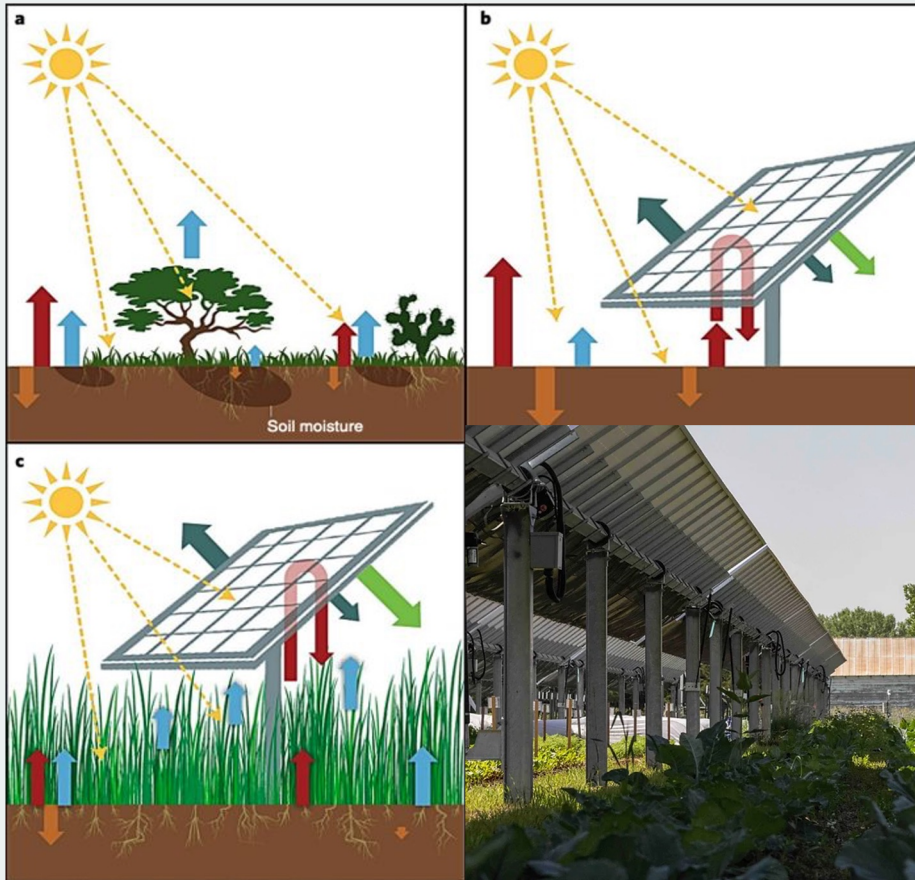
Site Suitability Analysis with GIS Mapping



Culture Nexus: Food, Water, Energy



Agrivoltaics



Source: Barron-Gafford et al., 2019



Success in Energy Sovereignty

- ❖ Champion or team to support multi-year development
- ❖ Center action with alignment in Tribal timelines, federal opportunity, and regulatory timelines
- ❖ Select supportive partners with values alignment and expertise

